

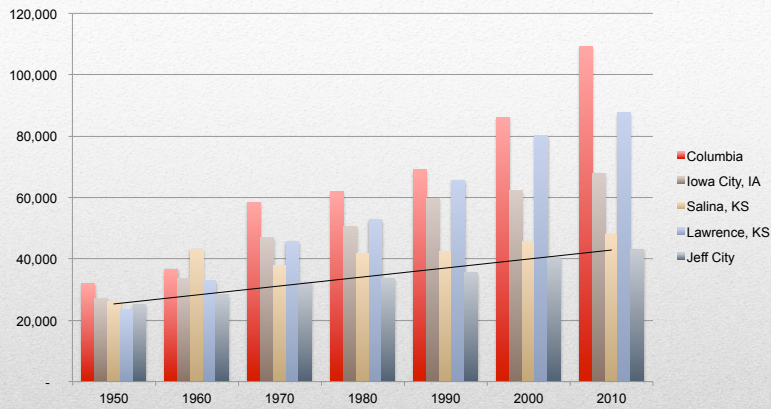
Stronger Together

- We believe in giving students more opportunities to reach their potential through smaller learning environments.
- We are out of space.
- A 2nd HS contributes toward “raising the bar” in our continued journey of pride through excellence in everything we do.

“A rising tide lifts all boats!”

- Columbia Public Schools – Battle High School – 2013 – 11% increase
- Liberty Public Schools – Liberty North High School - 2013
- Wentzville School District – Timberland High School – 2000
- Park Hill School District – Park Hill South High School - 1998
- Lee’s Summit School District
 - Lee’s Summit North HS – 1995
 - Lee’s Summit West HS – 2004
- Blue Springs School District – Blue Springs South HS – 1992
- Fort Zumwalt West High School – 1998
- Fort Zumwalt East High School – 2007
- Francis Howell Central High School – 1997
- Blue Valley West High School – 2001
- Blue Valley Southwest High School - 2010
- Iowa City, IA – population 67,862
- Salina, KS – population 47846

Student Participation Increase



Population impact of adding High Schools

Columbia – 1973, 2013

Iowa City – 1968

Salina, KS – 1971

Lawrence, KS – 1997

Jeff City – 2019?

Source: Wikipedia

Current Recommendation:

- Second high school on Hwy 179
- Major renovations & additions at current JCHS and Nichols Career Center
- \$1.10 tax levy increase

Where Do We Want to Be?

- High School
- Elementary
- Middle School

Out of Space

- JCHS = largest high school in MO
- Simonsen & JCHS, D+ facility rating (68.1 % & 69.5%)
 1. School site – Simonsen 63.0%, JCHS 69.0%
 2. Structural and mechanical – Simonsen 69.5%, JCHS 67.0%
 3. Plant maintainability – Simonsen 73.0%, JCHS 63.0%
 4. School building safety and security – Simonsen 62.0%, JCHS 75.0%
 5. Educational adequacy – Simonsen 69.0%, JCHS 67.5%
 6. Environment for education – Simonsen 72.0%, JCHS 72.0%
- \$22 M in deferred maintenance costs
 - \$15 million at JCHS
 - \$7 million at Simonsen

Out of Space



Nichols Career Center (NCC)

- 29 classrooms at NCC have JCHS students only
- 16 classrooms at NCC with sending school students

A 2nd HS would allow NCC to potentially expand and be used as originally intended.

Out of Space

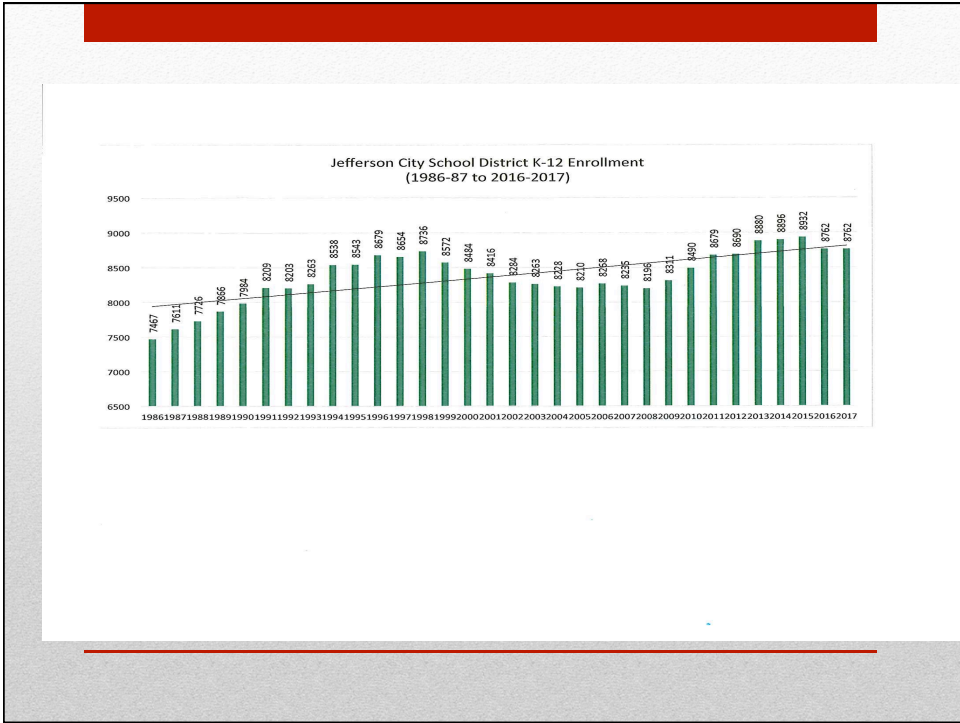


Major Field - Potential Trailers 2019 (\$300K)

“Why not an elementary school first?”

- Greater need in grades 9-12
- Boundary line changes – February board meeting to alleviate space issues at East Elementary

Out of Space



Enrollment by Grade 12/21/16

K:	739	6 th :	713
1 st :	703	7 th :	670
2 nd :	733	8 th :	626
3 rd :	686	9 th :	685
4 th :	772	10 th :	639
5 th :	686	11 th :	583
		12 th :	537

K-5 Avg 720

6-8 Avg 670

10-12 Avg 586

Out of Space

Nov 2014 – Long Range Facilities Committee:

- 7/2013–9/2014: 14 mtgs & 2 Town Halls
- Second High School & major renovations & additions at current JCHS
- New elementary school on east side with addition at Callaway Hills
- Redraw boundary lines

Out of Space - Timeline

July – September 2015

- Pause & get our house in order
- JCPS Staff feedback
 - Majority favored two high schools

October 2015 & Sept 2016

- Reaffirmed with Long Range Facilities Committee

Out of Space - Timeline

Why Now?

- Rising construction costs & interest rates
 - 2017 vs. 2018 cost projections = +\$6.5M
- Space needs are not going away
- 2nd high school available for current 6th grade class in 2019
- Build equity for future space needs at middle/elem schools = no tax increase

Out of Space

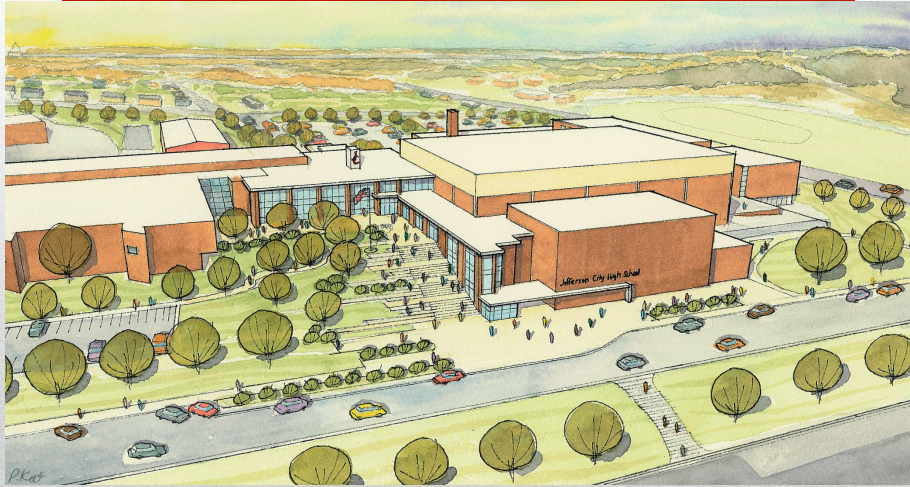
Imagery

Current South Aerial



Imagery

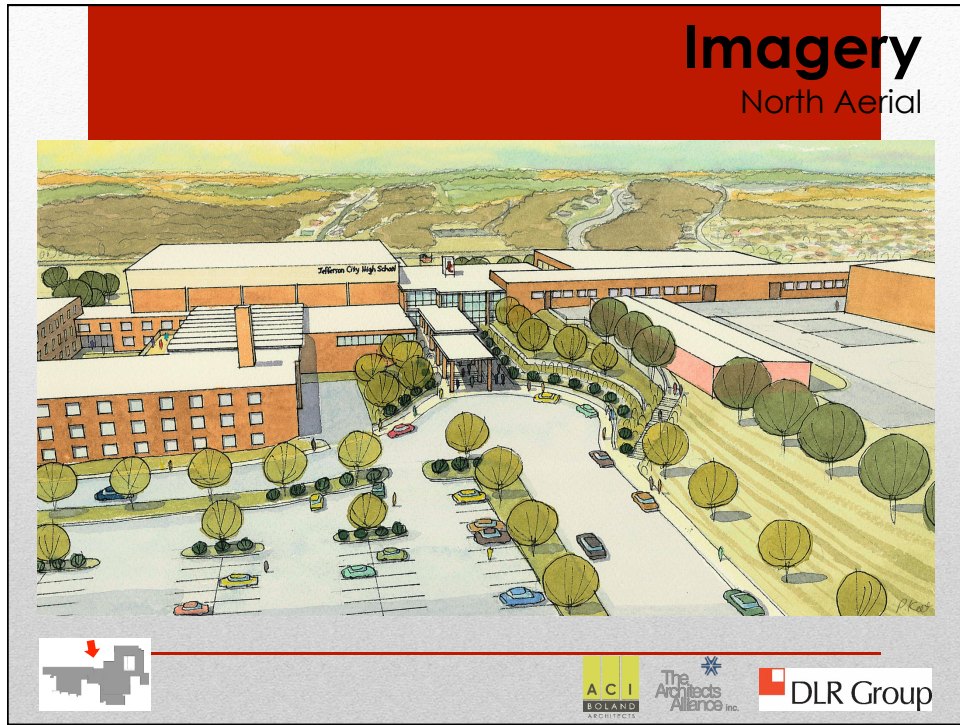
South Aerial



Imagery

Current North Aerial





Imagery

Existing Interior View/
Conceptual Renovation



Existing Corridor




Ottawa High School



Imagery

Existing Interior View/
Conceptual Renovation



Existing Little Theater



Benedictine College Learning Center



Imagery

Existing Interior View/
Conceptual Renovation



Existing Corridor (Nichols)

Benedictine College Learning Center

ACI BOLAND ARCHITECTS The Architects Alliance inc. DLR Group

Imagery

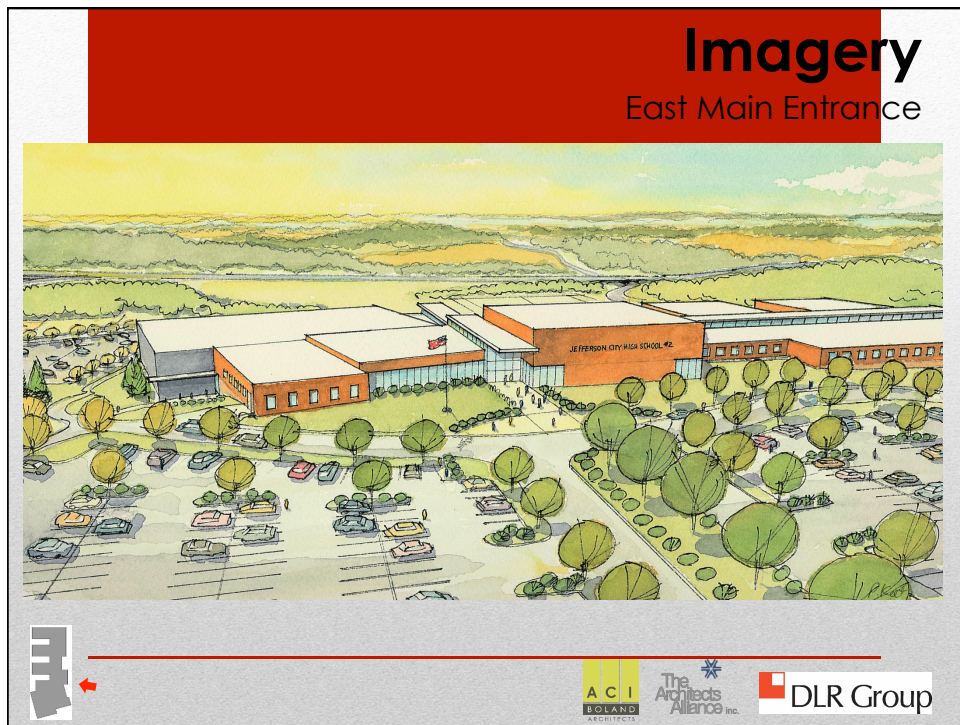
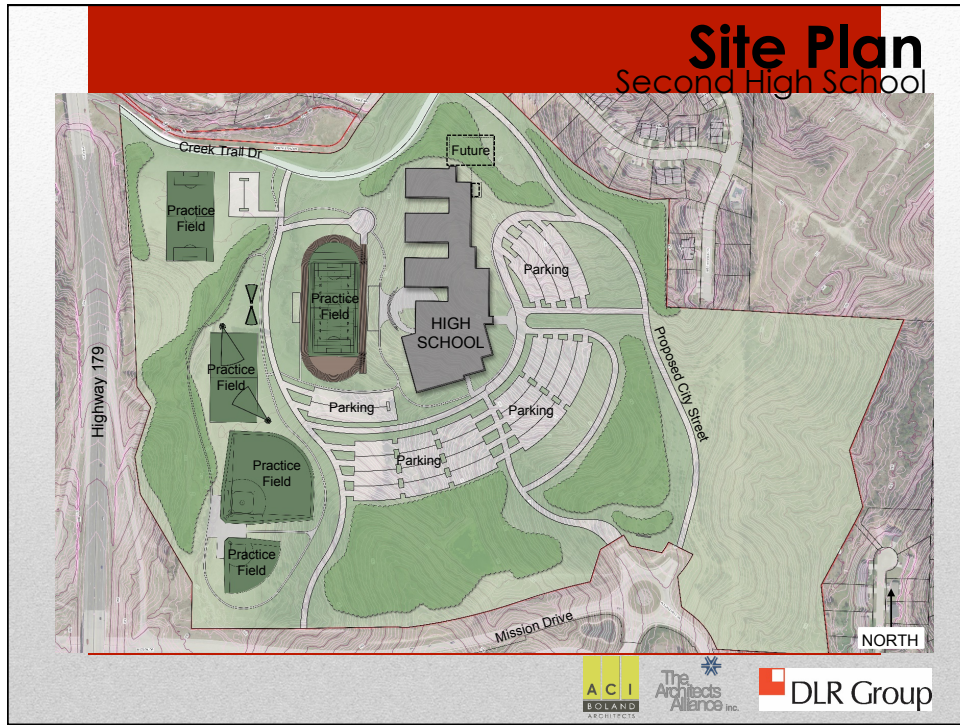
Existing Interior View/
Conceptual Renovation

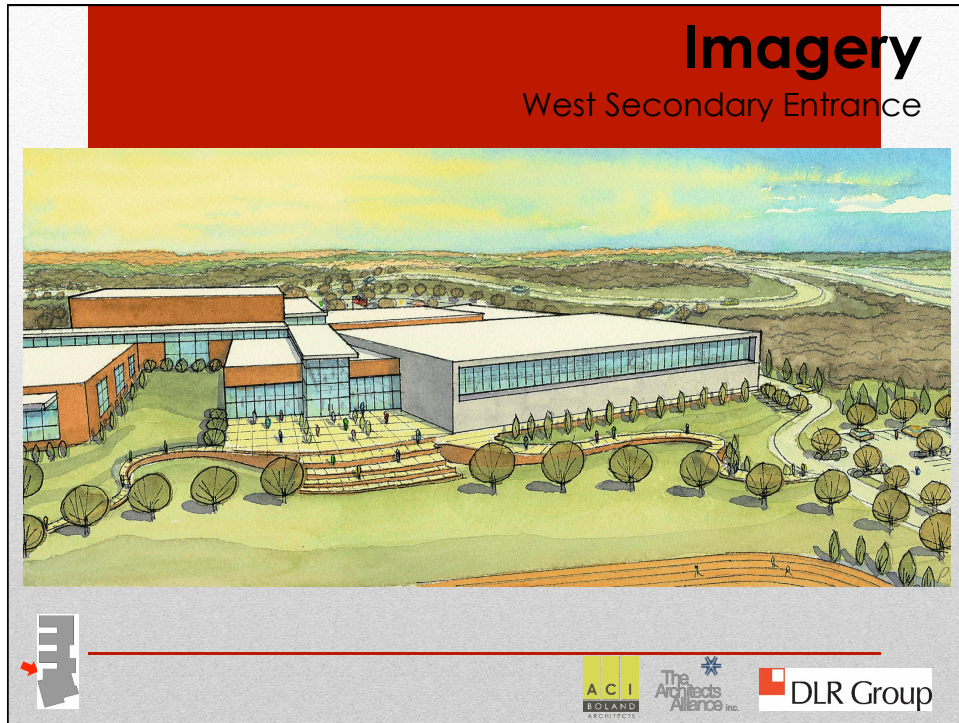


Existing Classroom

Lawrence College and Career Center

ACI BOLAND ARCHITECTS The Architects Alliance inc. DLR Group





Two High School FAQs:

- Who goes to which high school?
 - TJMS = 2nd HS, LCMS = Current
- Similar appearance – can't decide
- Athletics & Activities?
- Teachers choosing which building?
- Capital caroling?

Out of Space

Second High School:

- 27.5 additional teachers
- Another facility to light, heat, cool, etc.
- More salaries for club sponsors & coaches

Prop C – Operating Costs

The Dollars & Cents:

- 2016 tax levy \$3.69 – MO average \$4.19
- 2004 tax levy \$3.71 – MO average \$3.76
- Lower 1/3 Levy – Lower 1/3 Expectations?
- Similar size MO districts = \$5.30 average
- Spend \$9,536/student – MO avg. \$10,871
- Columbia Public Schools - \$6.04

Where Are We?

\$1.10 increase from \$3.69 to \$4.79

Proposition J (4/7 majority or 57.14% to pass):

- \$0.65 of the \$1.10 increase

Proposition C (simple majority to pass):

- Costs to Operate Second High School
 - \$0.25 of the \$1.10 increase
- Costs for Instructional Needs Grades K-12
 - \$0.20 of the \$1.10 increase

Ballot Measures

Instructional Needs K-12:

- Textbooks (digital & hard copy) & accompanying teacher planning resources
 - Not purchased in 10 years
- Technology Improvements in K-8 Classrooms
- Behavior & Mental Health Supports
- Callaway Hills Preschool Classroom

Prop C – Operating Costs

Projected Cost: \$130 million

- \$85 million to build second HS
- \$45 million to totally renovate current HS/NCC

2014 Projected Cost: \$116.4 million

- Why is the price tag higher now?
 - Inflation & rising construction costs
 - Turner Building Cost Index

Prop J - Construction

Why does a second HS cost so much? Battle HS

- \$75.9 million to build in 2010
- Inflation & rising construction costs
- Turner Building Cost Index
 - 2011 - 1.6% = 1.2144M + \$75.9M = \$77.1144M
 - 2012 - 2.1% = 1.6194M + \$77.1144M = \$78.7338M
 - 2013 - 4.1% = 3.228M + \$78.7338M = \$81.9619M
 - 2014 - 4.4% = 3.606M + \$81.9619M = \$85.568M
 - 2015 - 4.5% = 3.85M + \$85.568M = \$89.419M
 - 2016 - 4.7% = 4.20M + \$89.419M = \$93.62M
 - 2017 - 4.7%?? = 4.40014 + 93.62M = \$98.02014M

Comparison to Battle HS

Recap:

- \$1.10 increase, from \$3.69 to \$4.79
 - Build second high school
 - Renovate current JCHS & NCC
 - Funds to operate second high school
 - Additional instructional resources
 - No tax increase bond issues in future

Where Do We Want to Be?

- High School – April 2017
- Elementary – ??
- Middle School – ??

Out of Space

Community Support:

- Economic Necessity
- Workforce Readiness
- Property Values

How Will We Get There?

- We believe in giving students more opportunities to reach their potential through smaller learning environments.
- We are out of space.
- A 2nd HS contributes toward “raising the bar” in our continued journey of pride through excellence in everything we do.

“A rising tide lifts all boats!”

- CITIZENS INVESTING IN J + C
- Contact Brenda Hatfield, campaign coordinator:
brenda.hatfield@earthlink.net

Opportunities to serve

- Community Presentations & Education
- April 4th Election Day
- Questions?

Next Steps
