



Jefferson City School District Grade 2

Students and Families: Your goal is to complete the daily required activities each day we are not at school. Teachers and specialists will check their email periodically during the school day to answer questions and provide guidance.

Week of: May 4

Required Daily Activities:

Literacy		Math
Monday/Wednesday/Friday	Tuesday/Thursday	Monday-Friday
Read for 20 minutes. Retell what you read.	Read for 20 minutes. Retell what you read.	Practice math facts by playing a math fact game for 15 minutes.
Work on i-Ready Reading lessons for 15 minutes	Log in to the <u>Scholastic Learn at Home</u> website. Read the books/articles and complete the activities for one of the lessons. You can pick the lesson that looks interesting to you.	Work on i-Ready Math lessons for 15 minutes

Teacher Assigned Activities to Extend Learning: (Examples Shown Below)

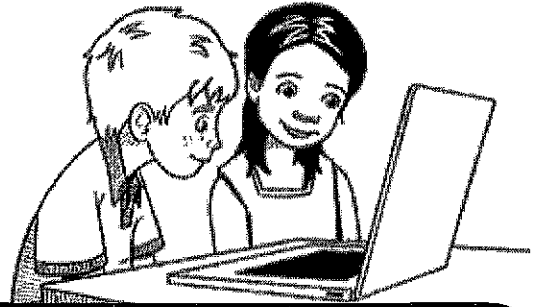
Literacy	Math	Science/Social Studies	Social Emotional Learning Activities	Other
<p>Scholastic News Articles **click Login, click I am a Student, type your class password:</p> <p>The password for ALL second graders is Clark2a</p> <p>(articles and worksheets also mailed home)</p> <p>Write at least 5 sentences each day in your journal/notebook.</p>	<p>Continue working on Splash Math or other math game websites.</p> <p>Additional worksheets included in mailed packet for extra practice.</p> <p>Create 3 digit addition/subtraction problems and solve.</p>	<p>https://www.sciencekids.co.nz/</p> <p><u>BrainPOP Jr</u></p> <p>Username: skyhawk2</p> <p>Password: skyhawk2</p>	<p><u>Counselor Lesson from Mrs. Engler</u></p>	<p>Practice your typing skills using <u>Typing Instructor</u></p> <p>Library: <u>Read a Poem Each Day</u></p> <p>Art: <u>Art Assignments</u></p> <p>Music: On google classroom</p> <p>PE: <u>K-2 PE Activities</u></p> <p>ESL Students Only: Buddy read with a family member. You read a page and then they read a page. I'll call you next week to chat about it!</p>

Name: _____

Video: "The Life of a Butterfly"

Watch a Video

Teachers: Students can read the questions before they watch the video. That way, they'll know what to pay attention to while watching!



1. Why do caterpillars have to eat so much as soon as they hatch?

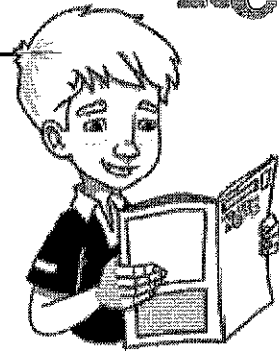
2. What happens inside a **chrysalis**?

3. What is the first step in a butterfly's life cycle?

4. Draw a picture of the first step in a butterfly's life cycle.

A large, empty rectangular box with rounded corners, intended for a student to draw a picture of the first step in a butterfly's life cycle.

Name: _____




Read and Think

Read your issue of *Scholastic News*.

As you read, stop and answer the questions below.

- 1.** Start reading the article.  at "Winter in a Tree."

Why do monarch butterflies have to migrate in the autumn?

- 2.** Read "Winter in a Tree." Then .

Where do the monarchs rest during the winter?

- 3.** Read "Flying North." Then .

What makes milkweed plants a good place for monarchs to lay eggs?

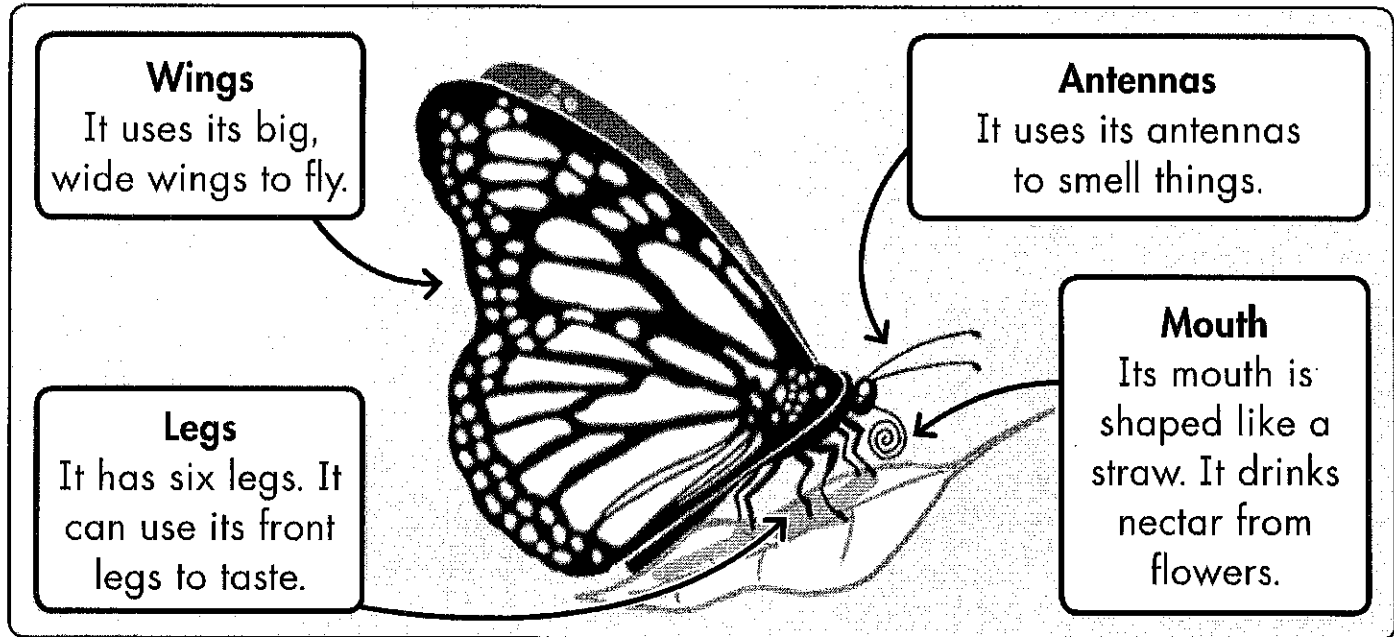
(Hint: What happens when the eggs hatch?)

- 4.** Where do the adult butterflies spend their summers?

Name: _____

Butterfly Diagram

Use the diagram to answer the questions.



1. Which body part can it use to smell?

☐ mouth☐ antennae☐ legs

2. How many legs does a butterfly have?

☐ two☐ six☐ eight

3. What does it do with its mouth?

☐ drinks nectar☐ flies☐ smells

4. Which body part is shaped like a straw?

☐ wing☐ head☐ mouth

Now color the diagram. You can color it to look like a monarch butterfly. Or make it any colors you like!

Name: _____

Word Work

Answer the questions about vocabulary words from your issue of *Scholastic News*.

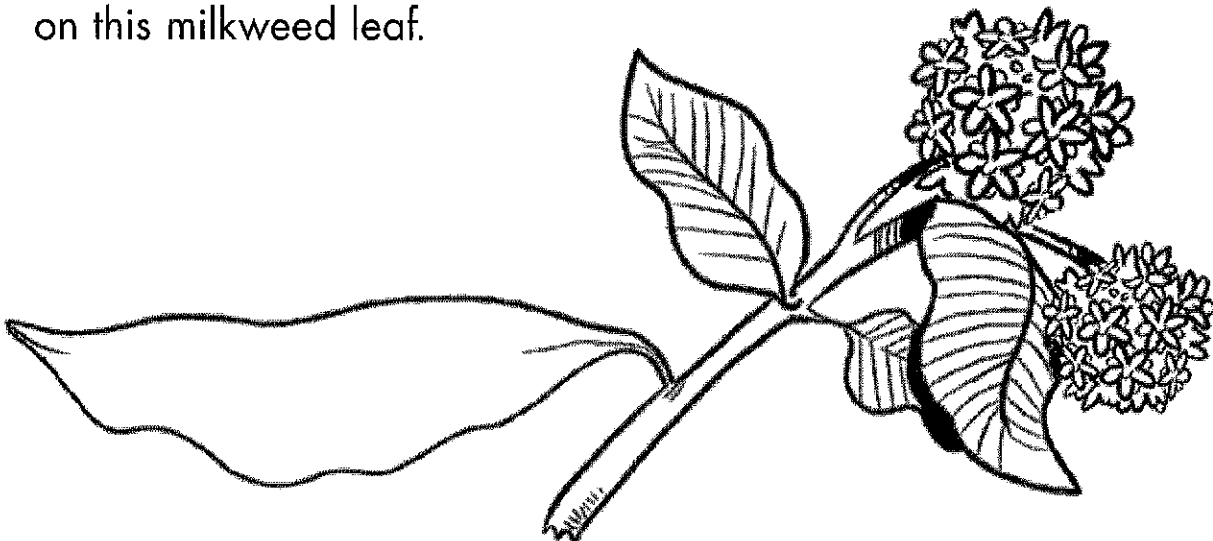
1. Every year, monarch butterflies **migrate**. Which sentence below tells about other animals migrating?

- ☐ Black bears stay in a den all winter.
- ☐ Squirrels stay where the weather is cold all winter.
- ☐ Geese fly far away to a warmer place in the winter.

2. When **caterpillars** go through a **metamorphosis**, what do they do?

- ☐ fly to Mexico
- ☐ change into adult butterflies
- ☐ lay eggs on milkweed

3. Draw a caterpillar
on this milkweed leaf.



Name: _____



Reading Checkpoint:

Butterflies Are Back!

Fill in the circle for each correct answer.

1. What is this article mostly about?

[main idea]

- ☐ (A) what a monarch butterfly eats
- ☐ (B) a monarch butterfly's favorite plants
- ☐ (C) how monarch butterflies migrate

2. Where do monarch butterflies**lay their eggs?** [key details]

- ☐ (A) on milkweed plants
- ☐ (B) on trees in Mexico
- ☐ (C) on dandelions

3. Look at the map on page 3. What do the orange arrows show you?

[nonfiction text features]

- ☐ (A) how monarch butterflies find food
- ☐ (B) the autumn path of monarch butterflies
- ☐ (C) the path monarchs take when they fly north

4. What happens when you**migrate?** [vocabulary]

- ☐ (A) You move a long distance.
- ☐ (B) You turn up the heat.
- ☐ (C) You take a vacation.

5. Why do you think Mexico makes**a good winter home for the****monarchs?** [making inferences]

- ☐ (A) The butterflies are warmer there.
- ☐ (B) The butterflies are really cold there.
- ☐ (C) A lot of milkweed plants grow there.

Adding by Counting On and Making a Ten

Name: _____

Add.

1 $8 + 2 =$ _____

2 $8 + 3 =$ _____

3 $6 + 4 =$ _____

4 $6 + 8 =$ _____

5 $7 + 3 =$ _____

6 $7 + 5 =$ _____

7 $9 + 1 =$ _____

8 $9 + 6 =$ _____

9 $5 + 5 =$ _____

10 $5 + 8 =$ _____

11 $9 + 2 =$ _____

12 $2 + 9 =$ _____

13 $8 + 4 =$ _____

14 $4 + 8 =$ _____

15 $6 + 9 =$ _____

16 $6 + 7 =$ _____

17 Which strategy did you use to solve problem 11? Explain.

Using Doubles and Doubles Plus 1

Name: _____

Add.

1 $4 + 4 =$ _____

2 $4 + 5 =$ _____

3 $6 + 6 =$ _____

4 $5 + 6 =$ _____

5 $7 + 7 =$ _____

6 $8 + 7 =$ _____

7 $9 + 9 =$ _____

8 $8 + 9 =$ _____

9 $5 + 5 =$ _____

10 $6 + 5 =$ _____

11 $8 + 8 =$ _____

12 $7 + 8 =$ _____

13 Which strategy did you use to solve problem 12? Explain why.

Counting On and Making a Ten to Subtract

Name: _____

Complete each set of equations.

1 $12 - 3 = \square$

$3 + \square = 12$

2 $14 - 5 = \square$

$5 + \square = 14$

3 $11 - 3 = \square$

$3 + \square = 11$

4 $15 - 7 = \square$

$7 + \square = 15$

5 $12 - \square = 10$

$12 - 4 = \square$

6 $13 - \square = 10$

$13 - 6 = \square$

7 $16 - \square = 10$

$16 - 9 = \square$

8 $15 - \square = 10$

$15 - 9 = \square$

- 9** In problem 6, how did you use your first answer to find your second answer?