


WELCOME!

**Academy Information
&
Jamboree Night**


**Gary Verslues
Director of Secondary Education**

**Welcome
&
The Academy Model**





Agriculture, Engineering, Trade & Industrial Academy



Agriculture Program of Study

General

Advanced Animal Science	1.0	Food Science	0.5	Intro to Agriculture	1.0
Ag Business, Sales & Marketing	1.0	Forest Management	0.5	Principles of Technology II	1.0
AP Biology - Dual Credit	1.0	Foundations of Animal & Plant Science	1.0	Small & Specialty Animals	0.5
Conservation of Natural Resources	0.5	Horticulture	1.0		
Equine Science	0.5				

Engineering, Trade & Industrial Programs of Study

CTE	PLTW	General
Automotive Technology I	Intro to Engineering Design	Electricity
Auto Collision Technology I	Principles of Engineering	Metals Technology I
Building Trades I - Dual Credit	Civil Engineering & Architecture	Metals Technology II
Mechanics I - Dual Credit	Engineering Design & Development	Principle of Technology II
HVAC I	Additional combination of 2.0 credits from CTE OR General Programs of Study OR the following courses:	Woodworking I
Welding I		Woodworking II
Additional 2.0 credits from PLTW or General Programs of Study	AP Biology - Dual Credit	Credits accrued from CTE OR PLTW may be used as part of the 6.0 credits for the General Program of Study.
OR	AP Calculus AB I	
Automotive Technology I/II	AP Calculus AB II - Dual Credit	
Auto Collision Technology I/II	AP Calculus BC - Dual Credit	
Building Trades I/II - Dual Credit	AP Physics A - Dual Credit	
HVAC I/II	AP Physics B - Dual Credit	
Mechanics I/II - Dual Credit	AP Statistics - Dual Credit	
Welding I/II	Pre AP Chemistry	

*Students need 6.0 credits from a Program of Study to receive an Academy Endorsement

..... (573) 659-3018 Find complete Academy information at: www.jcschools.us

June 2017



Health, Consumer & Public Services Academy

S³

Health Services Programs of Study

CTE	
Health Science	4.0
Additional 2.0 credits from PLTW OR General Programs of Study	

PLTW	
Principles of Biomedical Science	1.0
Human Body Systems	1.0
Medical Interventions	1.0
Bio Medical Innovation	1.0
Additional 2.0 credits from CTE OR General Programs of Study	

General	
Anatomy & Phys.	1.0
AP Biology - Dual Credit	1.0
AP Physics A - Dual Credit	1.0
AP Physics B - Dual Credit	1.0
AP Psychology - Dual Credit	1.5
AP Statistics - Dual Credit	1.0
Athletic Training & Nutrition	0.5
Human Biology	1.0
Intro to Health Services	0.5
Medical Chemistry	1.0
Medical Terminology	0.5
PreAP Chemistry	1.0
Psychology	0.5
Sports Medicine	0.5

Credits accrued from CTE or PLTW may be used as part of the 6.0 credits for the General Program of Study

Consumer Services Programs of Study

CTE	
Foods I	0.5
Culinary Arts I/II	4.0
Additional credits from the General Program of Study to total 6.0 credits	

General	
AP Psychology - Dual Credit	1.5
Desktop Publishing	0.5
Entrepreneurship A	0.5
Entrepreneurship B	0.5
Foods II	0.5
Interior Design & Decorating	0.5
Intro to Fashion Merchandising	0.5
Intro to Hospitality & Tourism Mngt	0.5
Intro to Human Services	0.5
Marketing	1.0
Psychology	0.5
Sociology I	0.5
Textile I	0.5
Textile II	0.5
World Foods	0.5

Credits accrued from CTE may be used as part of the 6.0 credits for the General Program of Study

Public Services Program of Study

General	
21st Century Communications	0.5
A+ Tutoring	0.5
AP Comparative Government & Politics - Dual Credit	1.0
AP Psychology - Dual Credit	1.5
AP US Government & Politics - Dual Credit	1.0
Business Law I	0.5
Business Law II	0.5
Child Development	0.5
Children's & Young Adult Literature	0.5
Civil Leadership - Dual Credit	0.5
Educational Psychology	0.5
Family Leadership	0.5
Global Studies	1.0
Intro to Human Services	0.5
Intro to Law, Public Safety, Corrections & Security	0.5
Legal Topics	0.5
Legislative Seminar - Dual Credit	0.5
Military Leadership - Dual Credit	1.0
Psychology	0.5
Sociology I	0.5
The School Age Child	0.5

*Students need 6.0 credits from a Program of Study to receive an Academy Endorsement
 (573) 659-3018 Find complete Academy information at: www.jcschools.us

June 2017



Communication, Arts & Business Academy

CAB

Communication Programs of Study

CTE	
Broadcast Media I	4.0
Graphic Communications I - Dual Credit	4.0
Additional 2.0 credits from General Program of Study OR	
Broadcast Media I & II	8.0
Graphic Communications I/II - Dual Credit	8.0

General	
21st Century Communication	0.5
Creative Writing	0.5
Desktop Publishing	0.5
Digital Photography	0.5
Foreign Language IV or AP	1.0
Help Desk	1.0
Interpersonal Communications	0.5
Intro to Media	0.5
Intro to Photography	0.5
Journalistic Prod. - Red & Black	2.0
Journalistic Prod. - Yearbook	2.0
Journalistic Writing	1.0
Speech II	0.5
Video Productions	1.0
Video Productions Independent Study	1.0
Web Design I	0.5
Web Design II	0.5

Arts Programs of Study

CTE	
Graphic Communications I - Dual Credit	4.0
Additional 2.0 credits from General Program of Study OR	
Graphic Communications I/II - Dual Credit	8.0

General	
Advanced Music Theory	0.5
Art I, II, III & IV	1.0 each
Ceramics I, II, & III	0.5 each
Chorale	2.0
Competitive Speaking and Interpretation	1.0
Concert Band	1.5
Concert Choir	2.0
Concert Orchestra	2.0
Debate II	0.5
Desktop Publishing	0.5
Digital Photography	0.5
Drama I/II	1.0
Freshman Choir	2.0
History of Jazz, Pop & Rock	0.5
Intro to Music Theory	0.5
Intro to Photography	0.5
J.C. Riot	1.0
Jazz Band	1.0
Journalistic Prod. - Red & Black	2.0
Journalistic Prod. - Yearbook	2.0
Marching Jay Band	1.0
Music Appreciation	0.5
Printmaking	0.5
Speech II	0.5
Symphonic Band	1.5
Symphonic Orchestra	2.0
Three Dimensional Art	0.5
Video Productions	1.0
Video Productions Independent Study	1.0
Web Design I & II	0.5 each

Business Programs of Study

CTE	
Computer Technology I - Dual Credit	4.0
Additional 2.0 credits from PLTW or General Programs of Study OR	
Computer Technology I/II - Dual Credit	8.0

PLTW	
Computer Science Essentials	1.0
Computer Science Principles	1.0
Computer Science A	1.0
**Cybersecurity	1.0


Additional credits from CTE or General Program of Study to total 6.0 credits
 **to be implemented in Fall of 2018.

General	
Accounting I	1.0
Accounting II - Dual Credit	1.0
Business Law I & II	0.5 each
Business Technology - Dual Credit	1.0
Computer Applications I	0.5
Computer Applications II - Dual Credit	0.5
Desktop Publishing	0.5
Entrepreneurship A or B	0.5 each
Global Business	0.5
Help Desk	1.0
Intro to Business	0.5
Marketing (CME)	1.0
Marketing Work Experience (CME)	Varies
Speech II	0.5
Web Design I & II	0.5 each


Credits accrued from CTE or PLTW may be used as part of the 6.0 credits for the General Program of Study

*Students need 6.0 credits from a Program of Study to receive an Academy Endorsement
 (573) 659-3018 Find complete Academy information at: www.jcschools.us

June 2017



The Traditional Path of Study



Jefferson City High School Diploma

SUBJECT	CREDITS
Language Arts	4.0
Math	3.0
Science	3.0
Social Studies	3.0
Fine Arts	1.0
Practical Arts	1.0
Personal Finance <i>(Can count as 0.50 of the Practical Arts requirement)</i>	0.5
P.E.	1.0
Health	0.5
Electives <i>12 units depending upon Personal Finance</i>	12.0/12.5
TOTAL	29

*All students must pass the Missouri and US Constitution tests to graduate.
**Required EOC exams in English II, Biology, Algebra I, and Government.

Jefferson City College Preparatory Certificate Requirements (starting with class of 2018)

SUBJECT	REQUIRED COURSES	CREDITS
Language Arts		4.0
Math	Algebra 1 through Math Analysis/Trig or higher	4.0
Science	Physical Science, Biology, Chemistry and 1 additional	4.0
Social Studies	Government/AP Govt. and Politics/AP Comparative Government, World History/AP Euro., U.S./AP U.S. History, and 1 additional	4.0
Fine Arts		1.0
Practical Arts		1.0
Personal Finance <i>(Can count as 0.50 of the Practical Arts requirement)</i>		0.5
P.E.		1.0
Health		0.5
World Language	2.0 units of the same World Language	2.0

*Must have a 3.5 G.P.A.
**Must have a rating of proficient or advanced on 2 of 3 MO Assessment Program tests administered at the High School level.

..... (573) 659-3018 Find complete Academy information at: www.jcschools.us

June 2017

What is an Academy?



A small learning community



A college preparatory curriculum with a career theme



Business Partnerships

Debbie Strobe Business Coordinator

Benefits of Business & Community Partnerships:

Provide Career Awareness –

- Serve as Guest Speakers
- Mentor small groups of students for career exploration
- Host site visits
- Offer Career Fair opportunities

Provide Relevance & increase Academic Achievement –

- Offer guidance on real-world projects
- Evaluate student presentations

October 2017 FAST Academy Guest Speakers

Date	Academy	Business	Name
Mon. Oct. 2	AETI Engineering, Trade & Industrial Program of Study	Buckley Powder Co. Technical Sales Representative	Brett Richter
Wed. Oct. 4	^{CAB} Business Program of Study	State Farm Insurance Agent	Spencer Ruyle
Fri., Oct. 6	S3 Public Services Program of Study	Boys & Girls Club Executive Director	Stephanie Johnson
Mon. Oct. 16	AETI Agriculture Program of Study & ^{CAB} Business Program of Study	FCS Financial Asst. Vice President (Missouri's rural finance experts, provide insights to Missouri's agricultural industry & rural living tips.)	Jeremy Haley
Wed. Oct. 25	^{CAB} Communication & Business Programs of Study	Huber & Associates Director of HR & Business Development	Ken Enloe
Mon. Oct. 30	S3 Health Program of Study	JCMG Podiatrist	Dr. McAleer

S³ Academy – Public Services Military Leadership & Missouri State Highway Patrol



S³ Academy – Health Services – Howard Plastic Surgery, CRMC & LU Nursing SIM Lab



AETI Academy – Engineering, Trade & Industrial – PLTW Bartlett & West



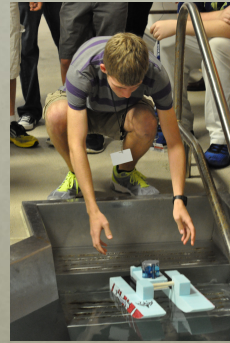
Joseph Lauchstaedt
Associate Principal, JCHS/PLTW Coordinator

AETI Academy	S ³ Academy	CAB Academy
<i>Engineering, Trade & Industrial</i>	<i>Health Services</i>	<i>Business</i>
Intro to Engineering Design	Principles of Biomedical Science	Computer Science Essentials
Principles of Engineering	Human Body Systems	Computer Science Principles
Civil Engineering & Architecture	Medical Interventions	Computer Science A
Engineering Design & Development	Biomedical Innovation	*Cybersecurity *Fall 2018

Benefits of PLTW:



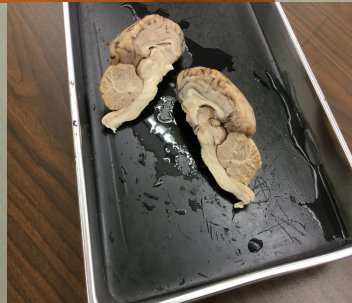
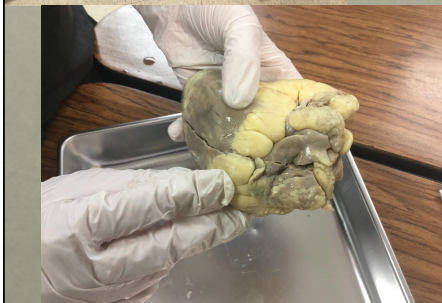
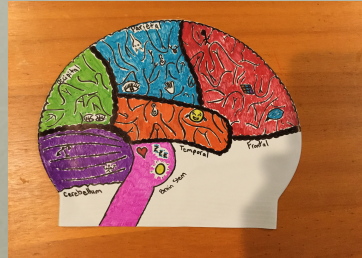
- An enriched education
- An understanding of applications of mathematics & science
- Useful career skills
- **College credit**
- A jump start on a successful future




Students taking Advanced Placement classes along with PLTW courses are eligible for:

- Pursuing work-based learning with leading industry partners
- Industry-based internships
- **Scholarships for two- or four-year degree programs**

Ragavi Premnath Academy Student Ambassador S³ Academy – Health Services – PLTW



 Sharon Longan Director Nichols Career Center		
AETI Academy	S³ Academy	CAB Academy
<i>Engineering, Trade & Industrial</i>	<i>Health Services</i>	<i>Communication</i>
Automotive Technology	Health Science	Broadcast Media
Auto Collision Technology	<i>Consumer Services</i>	Graphic Communications
Building Trades	Culinary Arts	<i>Arts</i>
Mechatronics		Graphic Communications
HVAC		<i>Business</i>
Welding		Computer Technology



Benefits of CTE Programs of Study:

- Articulation
- Industry Recognized Credentials
- Dual Enrollment
- Technical Skills Attainment Exams
- Internships
- Skills USA



MECHATRONICS



HVAC

Samantha Cassmeyer – 8th Grade Counselor @LCMS
Lisa Motley – 8th Grade Counselor @TJMS

Preparation for Academy Selection:

- ✓ *MissouriConnections.org*
- ✓ 7th Grade Academy 9-Week Encore Course
- ✓ 8th Grade Career Fair

8th Grade Registration Packets:

- ✓ Missouri Connections Individual Results
- ✓ Academy Selection Form

Jaime Marshall – Counselor @Simonsen 9th Grade
Carrie Welch – Counseling Director @JCHS

8th Grade Registration Packets:

- ✓ Advanced Placement/Dual Credit/PLTW Form
- ✓ Simonsen 9th Grade **Draft** Enrollment Form
& Enrollment Process

**Debbie Strobe
Business Coordinator**

**Academy
Jamboree**