



BACK TO JC SCHOOLS

2021-2022 SCHOOL RE-ENTRY PLAN

RELEASED: 8/6/21



LETTER FROM THE SUPERINTENDENT

Hello JC Schools Families,

The Jefferson City School District was proud to be one of the largest districts in the State of Missouri to remain in-seat last year, and we are looking forward to again welcoming students back for in-seat education on Monday, August 23rd.



DR. LARRY
LINTHACUM

Many of us were hopeful that COVID-19 would be in the rearview mirror by now. While that is unfortunately not the case, our district's COVID-19 reentry plan has proven to work extremely effectively as designed, by minimizing the exposure to any positive cases that do enter the school environment and allowing us to keep our schools open. For that reason, we will be keeping a majority of the same protocols in place for the 2021-2022 school year.

We have assessed the COVID-19 protocols that were in place last year, and we were able to successfully implement several changes for summer school that we will be keeping in place for the fall. Those changes are outlined in our full 2021-2022 reentry plan.

District leaders remain in frequent communication with the local health department and area schools. We are closely monitoring local conditions and guidance from health experts, which change frequently. **A decision on whether masks will be required for staff and students will be made no later than Monday, August 16th.**

The mask requirement for staff and students was lifted for the last two weeks of summer school and we were hopeful we would be able to begin the school year without a mask requirement. However, with the recent trend of new positive cases in our community and everything we are learning about the transmissibility of the Delta variant, we do not feel comfortable making a final decision on masks at this time.

As we prepare to come back to school, it will be critically important that we all remain committed to the key priorities of our COVID-19 reentry plan. Please remind your student of the importance of:

- **Social Distancing:** maintain a distance of at least three feet from others in the classroom and avoid direct contact such as handshaking, hugging, sharing drinks, etc;
- **Handwashing:** wash hands with soap and water for at least 30 seconds, avoid touching your face, cough or sneeze into your elbow, and disinfect frequently touched objects;
- **Staying Home When Sick:** students and staff who experience symptoms related to COVID-19 or come into close contact with someone who tests positive for COVID-19 should not come to school;
- **Keeping Yourself Safe:** wearing a mask and getting a COVID-19 vaccine are proven methods to protect against the spread of COVID-19 virus. In most cases, individuals who are wearing a mask properly or are vaccinated will not be required to quarantine if they come in contact with a positive case as long as they are not experiencing symptoms.

Despite the many challenges we faced last year, we had a very successful school year, and we are excited to welcome your student back! Our guiding principle throughout the entire COVID-19 pandemic has been, and will continue to be, our commitment to ensuring success for all of our students.

We sincerely appreciate your continued support and thank you for standing stronger together with JC Schools!

Superintendent Dr. Larry Linthacum
#WeAreJCSchools #JCStrongerTogether

#WeAreJCSchools
#JC Stronger Together



PAGE 1

KEY PRIORITIES

As we approach the 2021-2022 school year, the Jefferson City School District continues our work to minimize the risk of exposure to COVID-19 for students and staff. Our re-entry plans are designed to limit the exposure to any positive COVID-19 cases that do enter the school environment. These methods proved to be effective during the 2020-2021 school year.

The following key priorities have been proven to support the desire to provide an in-seat education model, by ensuring a safe learning environment for students and staff.

Our COVID-19 re-entry plan is built around the following foundational priorities which allow us to safely keep schools open:

- ① Increased sanitation efforts
- ② Social distancing
- ③ Staff + Student screening measures
- ④ Personal protective equipment
- ⑤ Limited visitor access to buildings
- ⑥ Virtual education options
- ⑦ Procedures for COVID-19 infections



INCREASED SANITATION EFFORTS

- JC Schools custodial team members will undergo a thorough disinfectant & sanitation training including discussion of proper product use by a chemical engineer and a review of CDC and State of Missouri health department cleaning expectations for during school and after hours.
- During school hours, custodians will thoroughly cover high touch surfaces throughout the building on an ongoing rotation throughout the day, including bathrooms, water bottle fill stations, doorknobs, entrance/exit handles, handrails, walls, etc.
- Cleaning materials and hand sanitizers will be in every classroom. Staff and students will be expected to support cleaning and disinfecting of classroom surfaces and supplies as needed, particularly when students change classrooms.
- Handwashing stations with soap and/or hand sanitizer will be available in classrooms, commonly used areas, and at the entrances and exits of all buildings.
- Students and staff will have scheduled times throughout the day to wash/sanitize hands and supplies.
- Drinking fountains will be turned off, but refillable water bottle stations can be used for individual drinking containers such as cups or bottles as outlined by each school building.
- First Student bus drivers will undergo sanitation training, and all school buses will be thoroughly sanitized before and after each route.

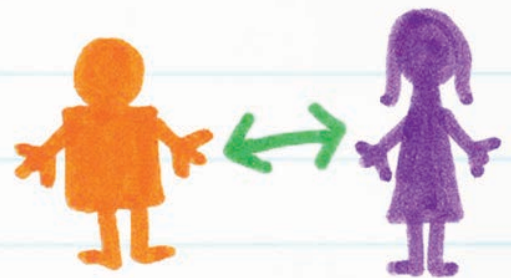


SOCIAL DISTANCING

What's different for the new school year?

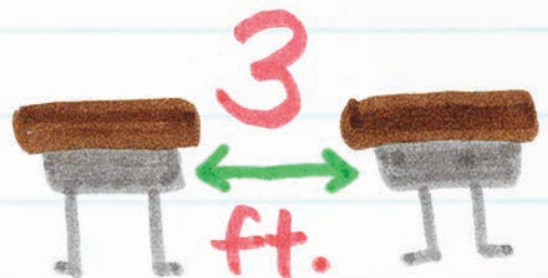
- **Modifications within the school day will be made as needed:**
 - Students will begin moving out of their primary classroom for music, art, library and PE. They will remain in their cohort groups to do so. Seating charts will be utilized and equipment will be sanitized between classes.
- **Modifications to meals will be made as needed:**
 - Some schools will begin allowing students to eat meals in the cafeteria again, within their small groups and while maintaining appropriate social distance to minimize exposure. Seating charts will be utilized to ensure students sit near the same students as in the classroom or homeroom.
- **Field trips are allowed at all grade levels.** If students ride the bus, they must sit next to the same students on the bus as they do in the classroom. If multiple classes are on the bus at the same time, the different classes must be separated by two rows of seats and not allowed to mix. While on the bus, masks will be required per federal mandate for public transportation.

- JC Schools will strive to create an environment that supports health guidelines without interrupting the education of our students.
- The goal is to limit exposure to as few other students and staff members as possible. Staff and students must do their very best to maintain as much distance as possible from others within school buildings.



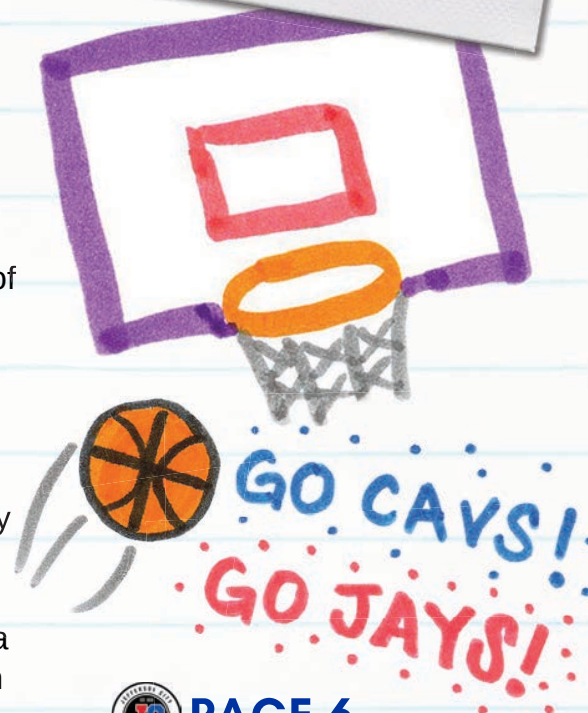
SOCIAL DISTANCING

- Parents should discuss the importance of social distancing with their students prior to the start of school. It will be difficult to ensure students maintain distance, but it is necessary for staff and students to understand the importance of doing so to help prevent exposure.
- Assigned seats will be utilized within classrooms, cafeteria, when occupying common areas, and for riding the bus. This will assist with contact tracing efforts if needed.
- Students will go immediately to designated classrooms upon arriving at school and will not congregate in hallways or common areas.
- In order to prevent students from congregating in hallways or common areas, buildings will only open 30 minutes before start times to ensure students can be supervised in individual classrooms as needed. Special arrangements for access into buildings outside of regular school hours (such as tutoring or extra/co-curricular activities) will be arranged by staff members and supervised accordingly.
- Desks in classrooms will be spaced as far apart as possible to allow for three feet of social distancing.



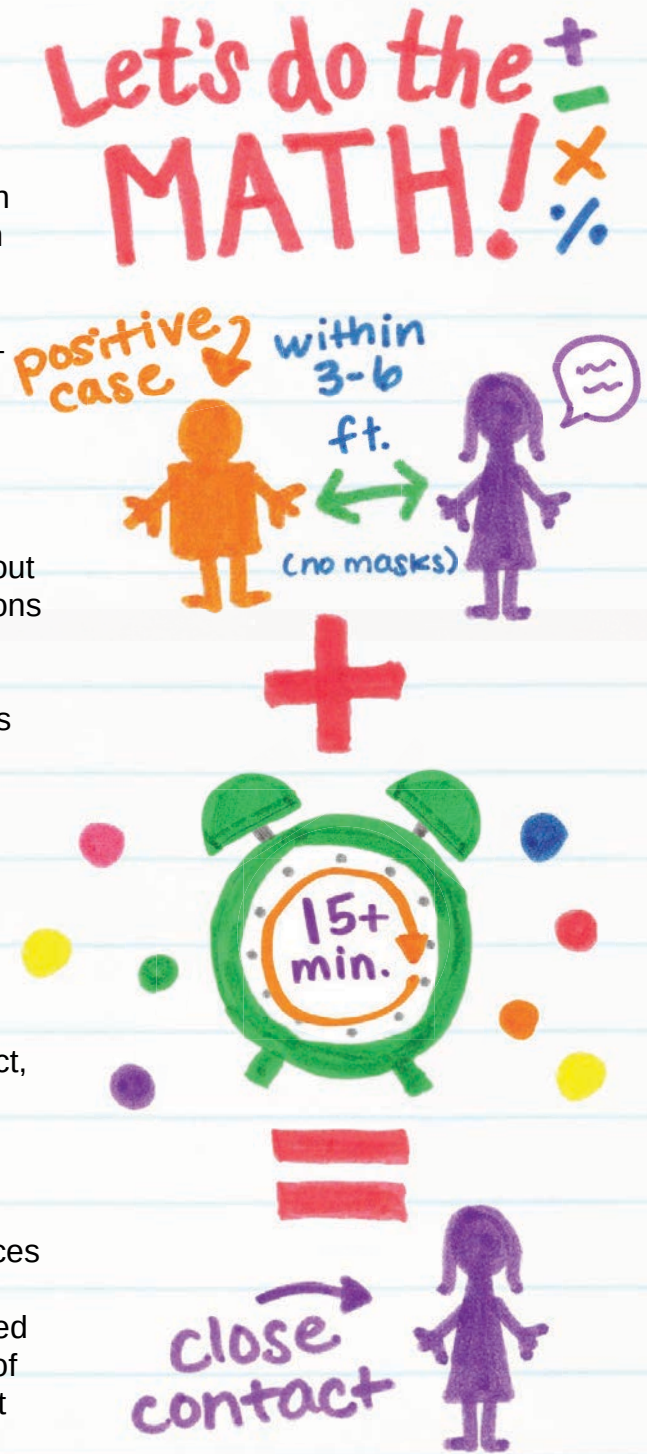
SOCIAL DISTANCING

- Modifications to bus loading and unloading procedures will be made, hand sanitizer will be available to students for boarding and unloading from the bus, and students will be assigned seats to limit exposure.
- Parents who can transport their students to/from school are encouraged to do so to help minimize the number of students riding the bus and allow for minimized contact.
- In-school gatherings such as assemblies, rallies, school parties, dances etc. will not be held unless social distance can be maintained and students can remain within limited small groups. School officials will review the current state of COVID-19 community spread and evaluate whether these gatherings should continue as scheduled, be cancelled, or be modified for health and safety reasons.
- Additional details and guidelines regarding extra/co-curricular activities and competition will be released directly by the Activities Department.
- Academics are considered a non-voluntary component of a student's education while co-curricular activity participation is voluntary. This approach will drive our planning and preparation for extra/co-curricular guidance when released.



SOCIAL DISTANCING

- Group work will be utilized if three-foot social distancing can be maintained.
- CDC guidelines regarding contact tracing define a close contact within the school environment as any individual within three to six feet of an infected person for a total of 15 minutes or more. Direct contact, such as handshaking, hugging, sharing drinks, etc., from one person to another removes the 15-minute close contact requirement and could result in quarantine — even if the time limit has not been reached.
- During recess classes must stay in their assigned cohorts and not be allowed to mix.
- District travel will be approved for student activities out of town, out of state, and overnight. Travel destinations classified as a hotspot will be off limits for district-related events. Activities Directors and Coaches will work with the JC Schools Director of Health Services to determine the level of risk of a destination before traveling.
- Outdoor activities, such as athletic games, will continue to have no restrictions on masks or attendance. Depending on community spread of COVID-19, these events will be evaluated, and enforcement of mask wearing and/or attendance limitations could be modified as seen fit by the district, particularly for indoor activities.
- Students in need of specialized instruction in small groups, such as for math, reading, or special education, will come together to receive those services despite being in different cohorts. Masks are recommended if social distance cannot be maintained and does not decrease the educational experience of the students. The goal of mask wearing is to prevent cross contamination and to help minimize close contacts from multiple classrooms in the event that a student or staff member participating in specialized instruction is a positive case.



STAFF & STUDENT SCREENING MEASURES

What's different for the new school year?

- **Schools will no longer monitor thermal cameras at building entrances or scan temperatures in car lines.** However, the cameras will stay in place, and building staff will still be notified if a temperature above 100.4 is detected.

- Students and adults who have come into close contact with someone who tests positive for COVID-19 should closely monitor for any COVID-19 symptoms and should follow all instructions given by the local health department related to contact tracing or guidelines as outlined by the school district.
- When students are kept home due to illness, the school attendance secretary will ask additional screening & entry questions regarding symptoms to confirm whether COVID-19 is a factor.
- Perfect attendance will not be incentivized by buildings as our preference is for anyone who is sick to stay home. Learning opportunities will be provided for all students who stay home due to illness.
- Where appropriate and if needed, handheld FDA approved infrared temperature readers will also be used at buildings, at additional entrances, by parent educators before meeting with families, for activities purposes, etc.

If your kid is sick in your neighborhood, who ya gonna call? the school secretary!



STAFF & STUDENT SCREENING MEASURES

Does your student have **ANY** of these symptoms?



runny nose
or congestion



shortness of breath or
difficulty breathing



close contact
to COVID-19
in last 10 days



loss of taste
or smell



nausea,
vomiting, or
diarrhea



sore throat



muscle aches



fever or chills



headache



cough

Please keep
your student
at home...

YES!



and call
your school
secretary!

- Students and staff who experience any of the symptoms related to COVID-19 should not come to school (symptoms include: fever or chills; cough; headache; muscle aches; nausea, vomiting or diarrhea; new loss of taste or smell; new runny nose or congestion; shortness of breath or difficulty breathing; sore throat; close contact with a person with COVID-19 in the last 10 days).
- Students and staff who are sent home with a temperature must be fever free for 24 hours without the use of fever reducing medications (such as Tylenol, Acetaminophen, Motrin, Ibuprofen etc.) and may return to school if accompanied by a doctor's note with a diagnosis not related to a respiratory illness, influenza or COVID-19, (such as pink eye, strep throat, ear infection, etc.). *Students and staff must be fever free for 72 hours without the use of fever reducing medications (such as Tylenol, Acetaminophen, Motrin, Ibuprofen etc.) if not accompanied by a doctor's note for a diagnosis.*



PERSONAL PROTECTIVE EQUIPMENT



Whether JC Schools will require students and staff to wear masks during the school day is

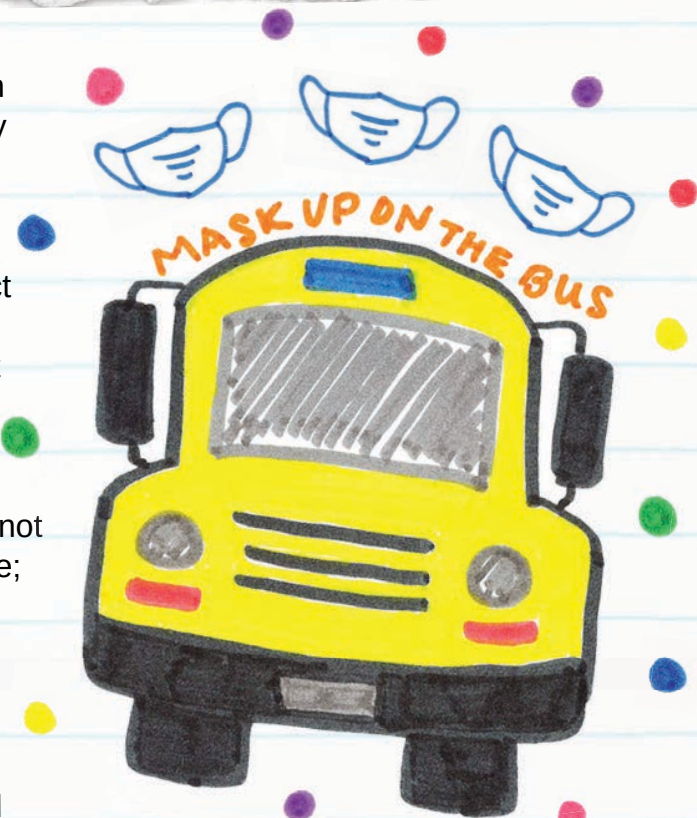
2 B
determined.

A decision will be announced on or before August 16.



PERSONAL PROTECTIVE EQUIPMENT

- Masks **will be** required on the school bus for both students and drivers per a federal order issued by the CDC that requires masks on all school buses and other forms of public transportation.
- The use of masks will be factored into any contact tracing investigation:
 - Close contacts of a positive case who are not vaccinated and not wearing a mask will be required to quarantine;
 - Close contacts of a positive case who are vaccinated, are not wearing a mask, and are not symptomatic will not be required to quarantine;
 - Close contacts of a positive case who are vaccinated, are not wearing a mask, and are symptomatic will be required to quarantine.
- The use of masks or face coverings will not be prohibited in any instances throughout the school day where a student or staff member chooses to wear them. Due to possible medical related concerns or personal preference, JC Schools fully understands some staff and students may still choose to wear masks throughout the school day.
- Existing student and staff dress codes will apply to face coverings that are worn.
- The Jefferson City School District does not currently mandate COVID vaccination for those who are eligible. Vaccinations are available in the community for those who meet eligibility requirements.
- JC Schools will not track who is vaccinated unless mandated to do so by state requirements. However, we will utilize the state's vaccination database to determine whether individuals have been vaccinated for contact tracing investigations.



Learn about the
COVID-19 vaccine at
covid.vaccine.mo.gov



LIMITED VISITOR ACCESS TO BUILDINGS

- In order to minimize the exposure of all students and staff to others outside of their assigned small groups, non-essential visitors and parents will not be permitted beyond the secure vestibules at school buildings during the school day.



Essential visitors



**MUST
MASK UP!**

- Any essential visitors who do enter the building will be required to enter through the main entrance, and will be required to wear a mask while in the building and will be tracked in a visitor log to include symptom screening questions, date and time of visit, where in the building they travel to, and which, if any, students or staff they have contact with.

- These restrictions will apply during the school day but may differ somewhat for evening activities, which are optional to attend.



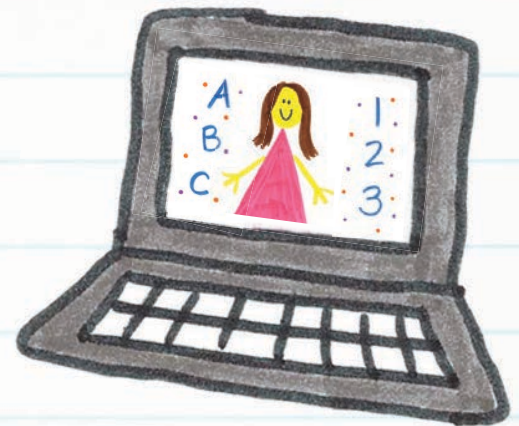
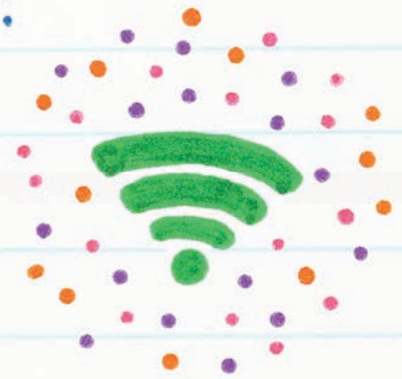
VIRTUAL EDUCATION

Go to jcschools.us to learn all about

L A U N C H

and virtual education!

- The district's preferred provider for virtual education is Launch, an online education platform which was used by JC Schools in 2020-2021.
- Launch has a rigorous K-12 curriculum that is aligned with the Missouri Learning Standards, is currently used by over 270 districts across the State of Missouri, and is staffed by certified educators who live and work in partner districts.
- Families considering virtual learning should complete the virtual enrollment application **as soon as possible** on the district website [HERE](#).
- Once you have completed the virtual enrollment application form, school staff will review your application and contact you for further information.
- Students approved for virtual education will have a 10-day window to transfer back to in-seat instruction without penalty. Otherwise, they must remain in the virtual program for the duration of the semester for which they were approved.
- Students approved for virtual education will be issued a technology device by Launch or JC Schools.
- Students approved for virtual education can participate in extracurricular activities as long as they meet MSHSAA requirements.



VIRTUAL EDUCATION

virtual student success TRACKER



- Middle and high school students approved for virtual education may choose a hybrid of online and in-seat courses if so desired.
- Upon approval for virtual education, additional scheduling logistics will be arranged directly with the student's school staff.
- Grades from Launch courses will be transferred to JC Schools and will factor into the student's GPA.
- Students approved for virtual education for the first semester of the 2021-2022 school year can return to in-seat enrollment for the second semester if so desired, or may remain virtual for the duration of the school year.
- If a student is not successful with Launch, they may not be approved for future semesters.
- IEP teams will create and update Distance Learning Plans for all students who have active IEPs. These plans will be utilized in the event of emergency school closures as well as any extended student absence. Distance learning plans will incorporate parental and staff input in order to identify the individual priorities for a student during a potential closure as well as develop a communication plan between home and school. In addition, the IEP team will determine services, accommodations, modifications, and progress monitoring methods that will be utilized during any short or long-term closure.



PROCEDURES FOR COVID-19 INFECTION RESPONSE

- Students or staff who display symptoms of COVID-19 while at school may be evaluated and moved to a designated area within the school building to minimize contact with others until they go home.
- If JC Schools receives official notification of a student or staff member testing positive for COVID-19, a contact tracing investigation will be conducted by the district to determine who the individual may have had close contact with while symptomatic or within 48 hours of becoming symptomatic.
- Students and staff who are identified as a close contact of the positive case will not be permitted to return to school until after they have completed the designated quarantine window or have met current guidelines to return to school.
- Students and staff may be contacted to assist with contact tracing efforts, review assigned seating charts, and to determine which individuals the positive case had contact with while contagious.
- If proof of vaccination or proof of immunity cannot be obtained during a contact tracing investigation, the close contact of a positive case will be required to quarantine if deemed necessary.
- If considered a close contact and required to quarantine following a contact tracing investigation, staff and students will be given options on when to return to work or school to help them return safely.

What is CONTACT TRACING?

Contact tracing helps prevent the spread of infectious disease.

In general, contact tracing involves identifying people who have an infectious disease (cases) and people who they came in contact with (contacts) and working with them to interrupt disease spread.

This includes asking people with COVID-19 to isolate and depending on the contact tracing results, possibly also asking their contacts to quarantine at home voluntarily.

Contact tracing is a core disease control activity. It has been used for decades to slow or stop the spread of infectious disease.

Source: The Centers for Disease Control and Prevention (CDC)

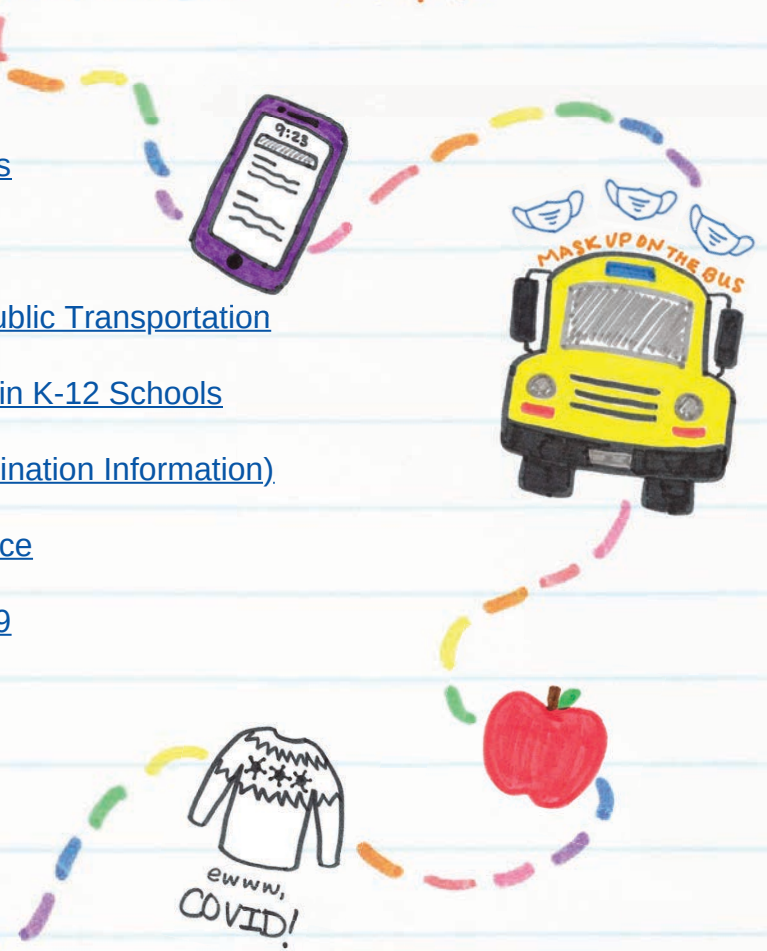


ADDITIONAL RESOURCES



- [CDC: Coronavirus Symptoms](#)
- [CDC: When and How to Wash Your Hands](#)
- [CDC: How to Wear Cloth Face Coverings](#)
- [CDC: Requirements for Face Masks on Public Transportation](#)
- [CDC: Guidance for COVID-19 Prevention in K-12 Schools](#)
- [State of Missouri: MO Stops COVID \(Vaccination Information\)](#)
- [DHSS & DESE School Reopening Guidance](#)
- [Cole County Health Department COVID-19](#)
- [Callaway County COVID-19 Website](#)

The Jefferson City School District's 2021-2022 COVID-19 Re-entry Plan is subject to change if local conditions warrant a tightening or loosening of any of the proposed guidelines.



The More You Know 

