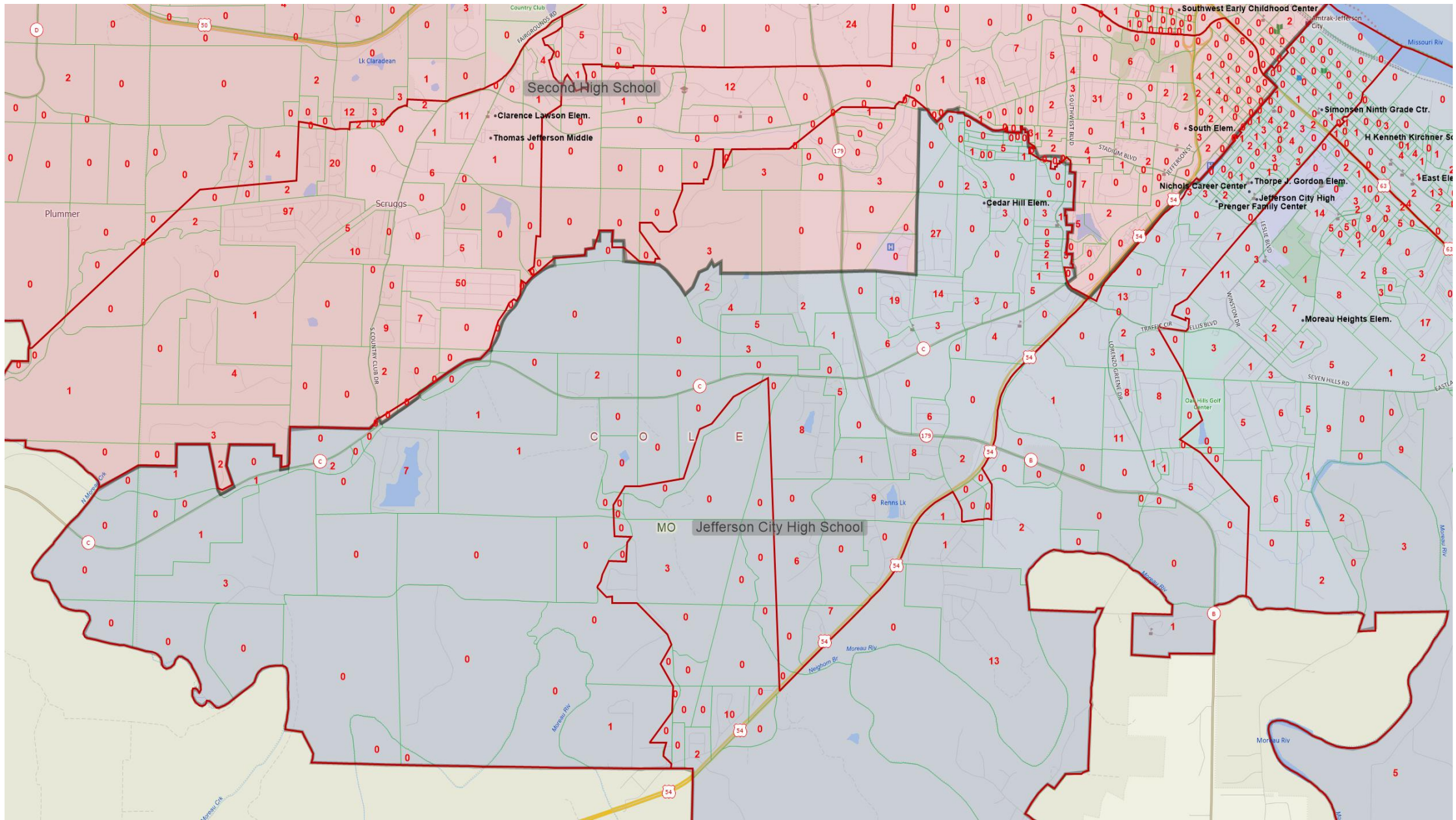
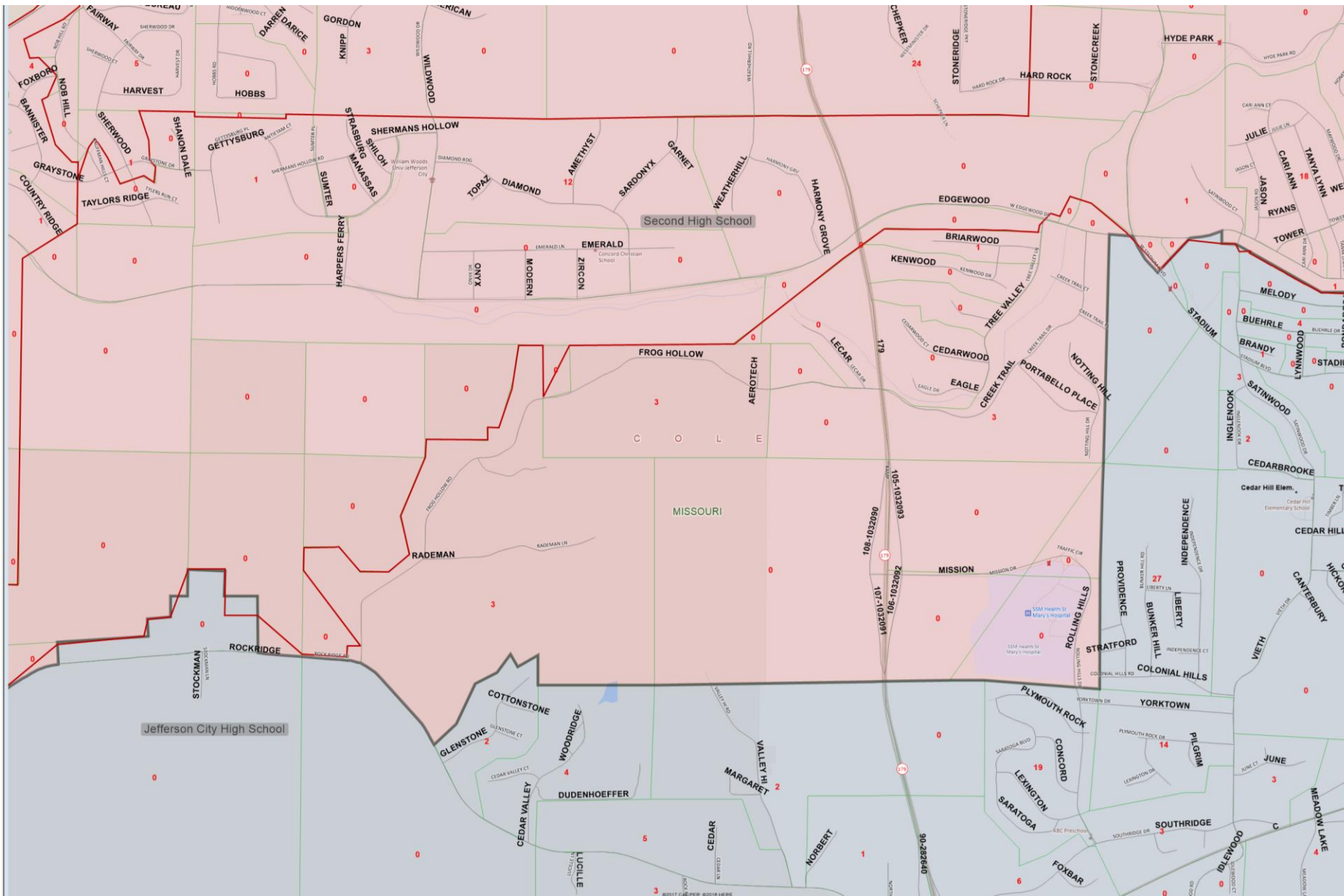


Current Building Capacities/Enrollment		SCENARIO A			
School	Comfortable Capacity	Current Student Count 9-12	Variance from Capacity (Negative is overcapacity-- need to move out students)	Current 9-12 Geocoded FR/L 2017-18	Current Percentage 9-12 Geocoded FR/L 2017-18
Current Jefferson City	1,500	1,252	248	654	52.2%
Second High School	1,500	1,213	287	593	48.9%
<b>TOTAL</b>	<b>3,000</b>	2,465	535	1,247	50.6%
		<b>-39</b>	<b>39</b>		<b>3.3%</b>
		<b>69 STUDENTS CHANGING SCHOOLS</b>			

The difference in enrollment is 39 students. For FR/L, the spread is 3.3% from top to bottom. Scenario 7 had the FR/L % spread to 4.1% but 1 student difference in enrollment. Scenario 7 affected 88 students and this one affects 69



The 2<sup>nd</sup> HS area is expanded west along Mission Road.



The 2<sup>nd</sup> HS area is expanded west along Mission Road.



Circle 1 has students attending Lewis and Clark MS and going to the 2<sup>nd</sup> HS. Circle 2 has students attending Thomas Jefferson MS and going to the current HS.