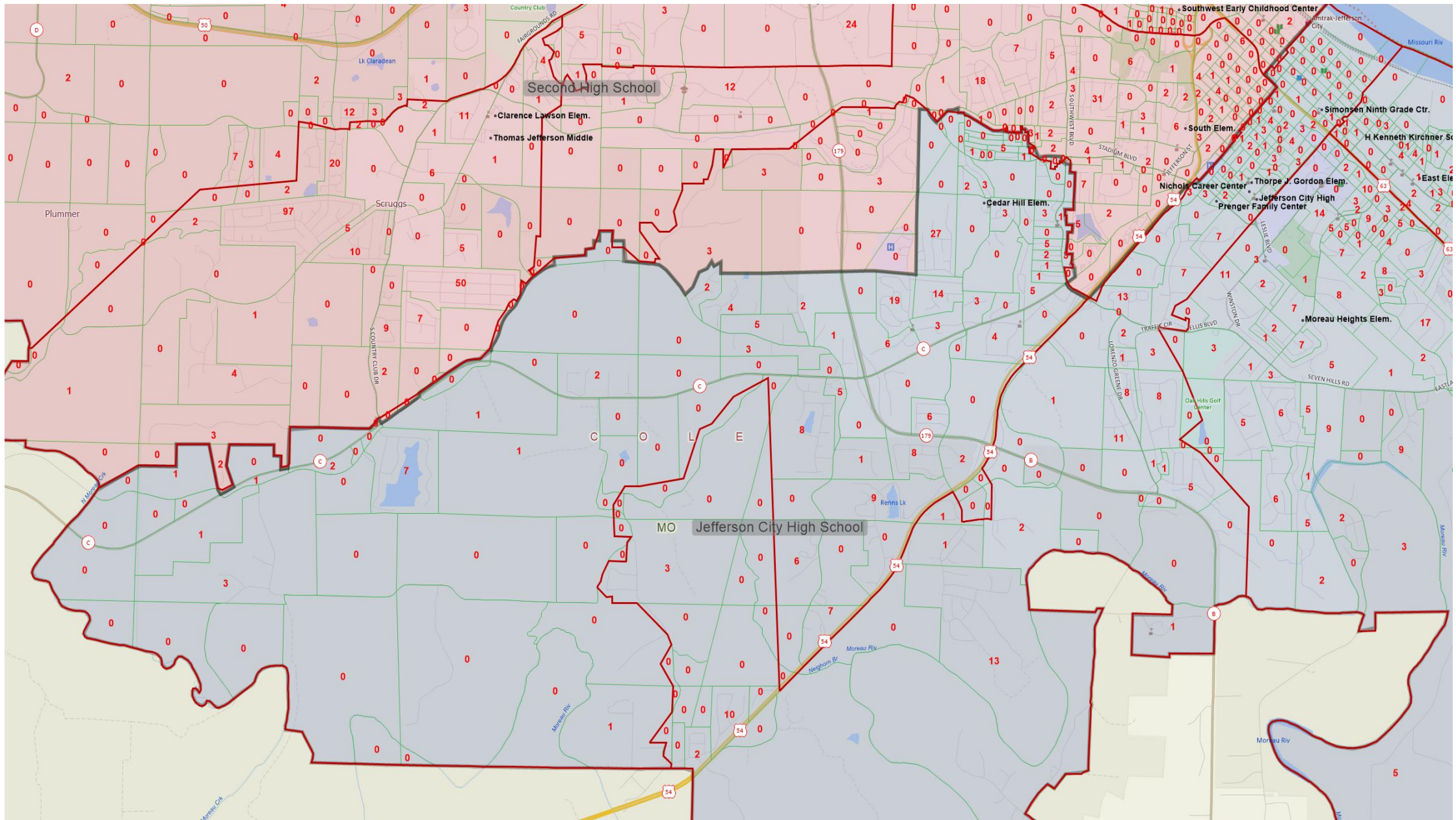
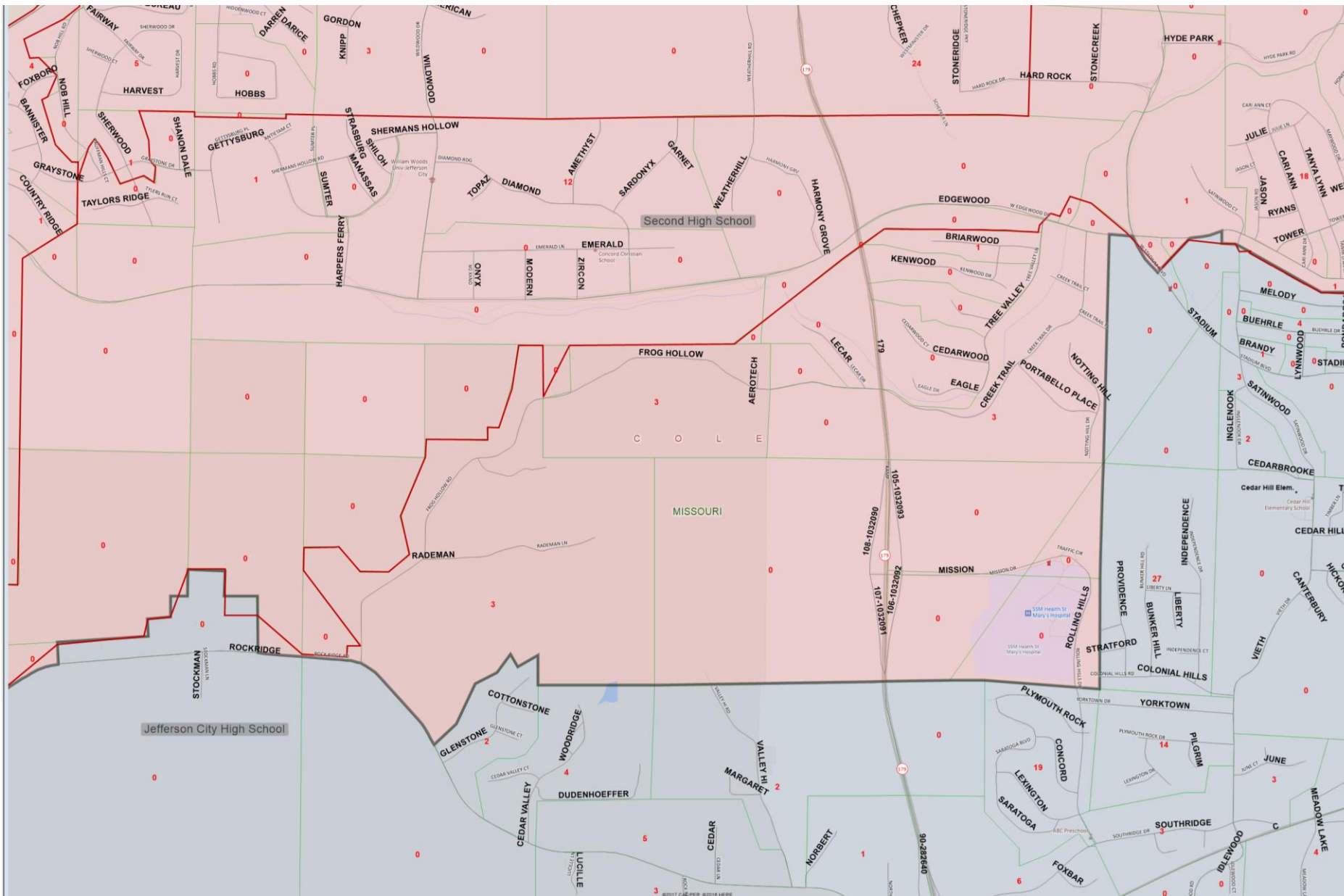


Current Building Capacities/Enrollment		SCENARIO B			
School	Comfortable Capacity	Current Student Count 9-12	Variance from Capacity (Negative is overcapacity-- need to move out students)	Current 9-12 Geocoded FR/L 2017-18	Current Percentage 9-12 Geocoded FR/L 2017-18
Current Jefferson City	1,500	1,252	248	654	52.2%
Second High School	1,500	1,213	287	593	48.9%
TOTAL	3,000	2,465	535	1,247	50.6%
		-39	39		3.3%
		69 STUDENTS CHANGING SCHOOLS			

The difference in enrollment is 39 students. For FR/L, the spread is 3.3% from top to bottom. Scenario 7 had the FR/L % spread to 4.1% but 1 student difference in enrollment. Scenario 7 affected 88 students and this one affects 69



The 2nd HS area is expanded west along Mission Road.



The 2nd HS area is expanded west along Mission Road.



Circle 1 has students attending Lewis and Clark MS and going to the 2nd HS. Circle 2 has students attending Thomas Jefferson MS and going to the current HS.