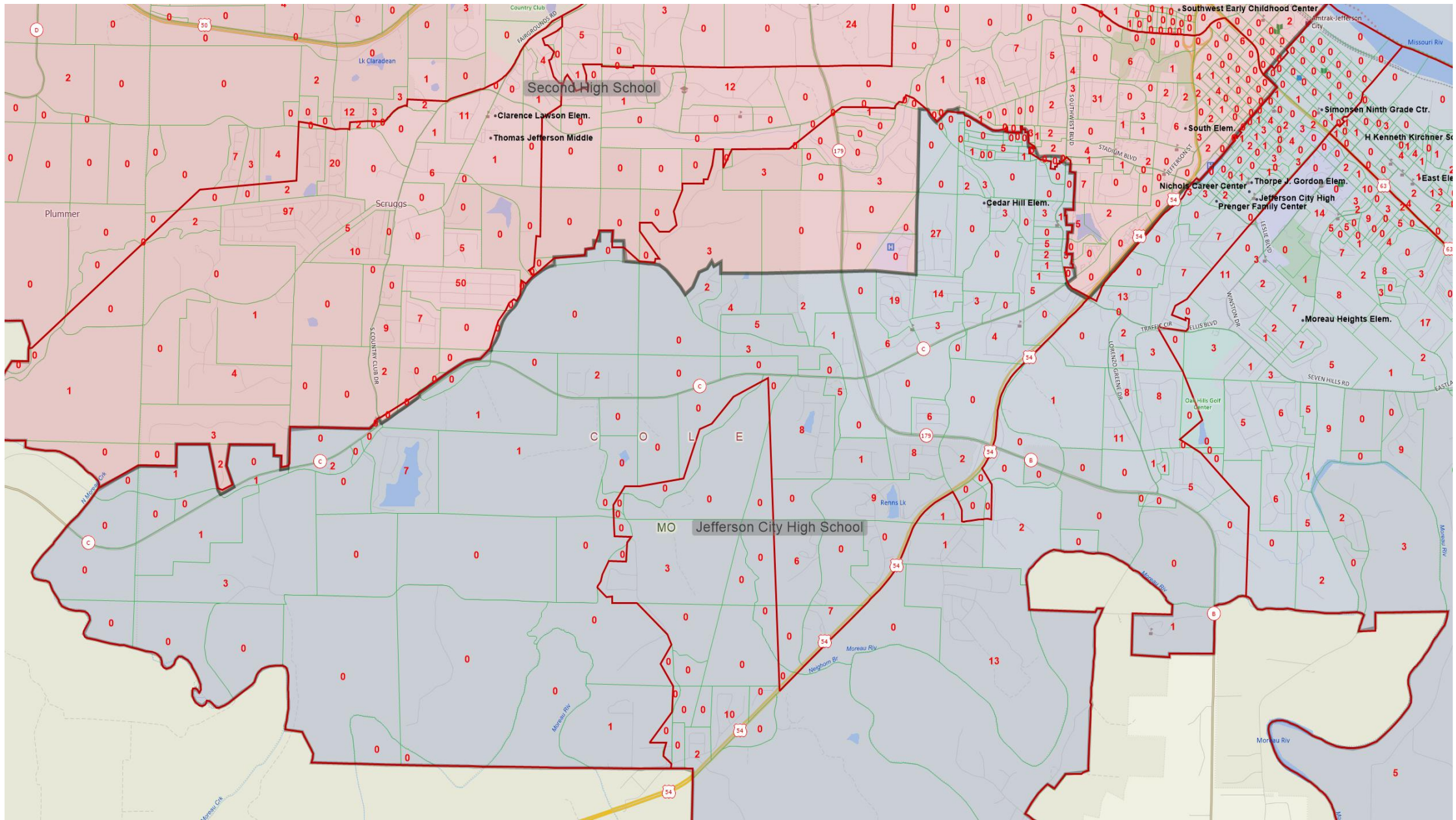
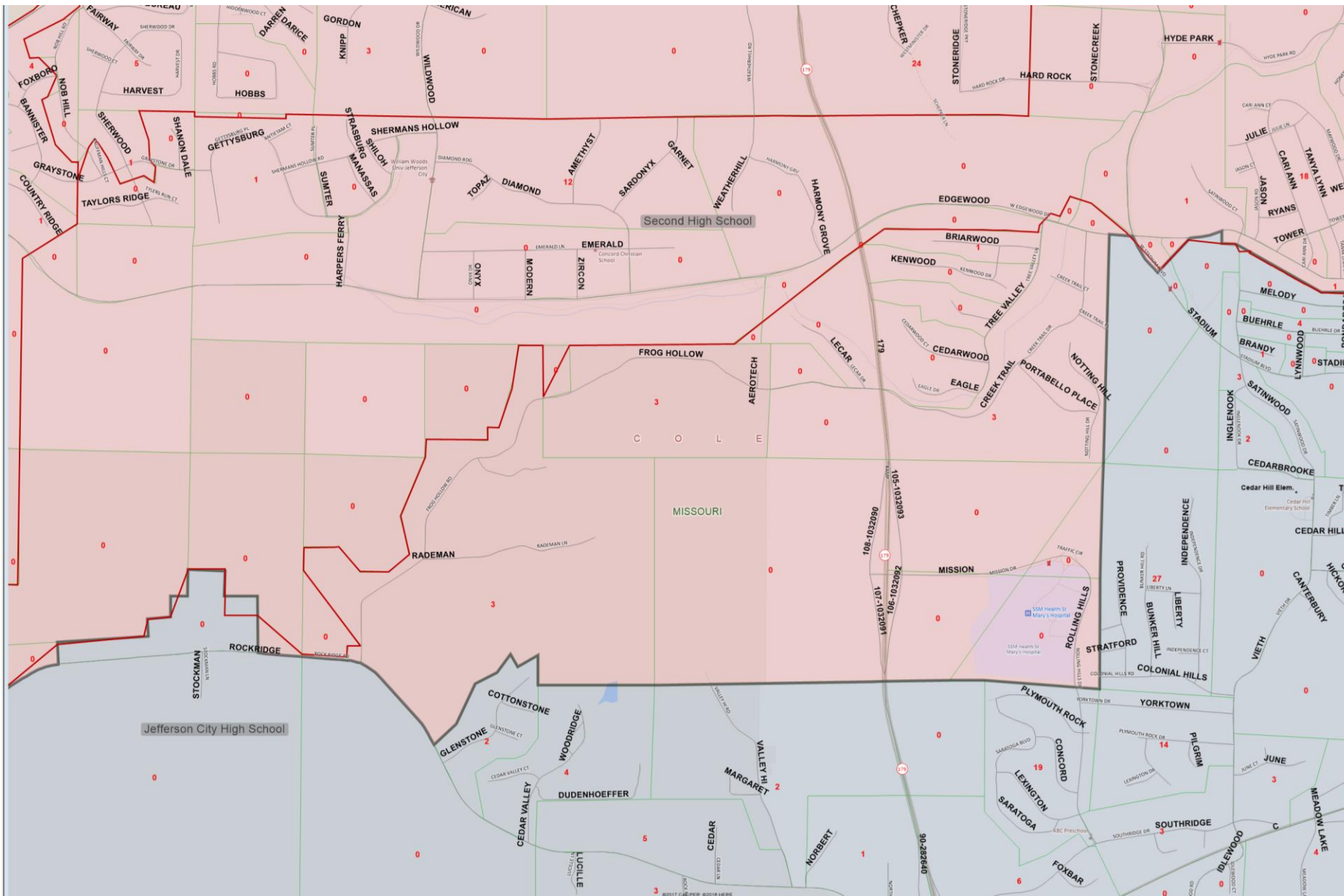


Current Building Capacities/Enrollment		SCENARIO 14			
School	Comfortable Capacity	Current Student Count 9-12	Variance from Capacity (Negative is overcapacity-- need to move out students)	Current 9-12 Geocoded FR/L 2017-18	Current Percentage 9-12 Geocoded FR/L 2017-18
Current Jefferson City	1,500	1,252	248	654	52.2%
Second High School	1,500	1,213	287	593	48.9%
TOTAL	3,000	2,465	535	1,247	50.6%
		-39	39		3.3%
		69 STUDENTS CHANGING SCHOOLS			

The difference in enrollment is 39 students. For FR/L, the spread is 3.3% from top to bottom. Scenario 7 had the FR/L % spread to 4.1% but 1 student difference in enrollment. Scenario 7 affected 88 students and this one affects 69



The 2nd HS area is expanded west along Mission Road, building on Scenario 13



The 2nd HS area is expanded west along Mission Road, building on Scenario 13



Circle 1 has students attending Lewis and Clark MS and going to the 2nd HS. Circle 2 has students attending Thomas Jefferson MS and going to the current HS.